

## EARLY VOTING BUFFER ZONES AND CAMPAIGNING AREAS

The following is a list of Cumberland County Early Voting sites concerning the 2024 electioneering. Buffer zones are set as designated by G.S. 163-166.4(b) and G.S. 163-166.4(e). Election officials will mark buffer zones and “No Campaigning Beyond This Point” signs at each Early Voting site. Each Early Voting site has a 50-foot buffer zone marked from the voting entrance of each location. **Campaigners or persons distributing campaign literature should never block traffic, parking or entrances.**

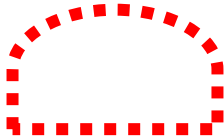
Campaigners are not to enter the buffer zone except for use of restroom facilities, business with another entity in a building jointly occupied, or for voting purposes. Please note public restroom facilities may not be available at all Early Voting sites.

While inside the buffer zone for one of the aforementioned reasons, campaigners should refrain from engaging in activities that violate or appear to violate campaigning guidelines. Campaigning issues or suspected violations are to be brought to the attention of the Chief Judge and the Board of Elections office.

Irene Grimes, Chairperson  
Cumberland County Board of Elections  
Adopted August 2024

### LEGEND

*(Please note: Depicted areas are not to scale)*



BUFFER ZONE AREAS  
50 FT. YELLOW TAPE /  
MARKINGS



CAMPAIGNING  
AREA  
DESIGNATES WHERE CAMPAIGNERS,  
SIGNS AND GENERAL CAMPAIGNING  
SHOULD TAKE PLACE



VOTER  
PARKING



CURBSIDE  
VOTING



ADA  
PARKING

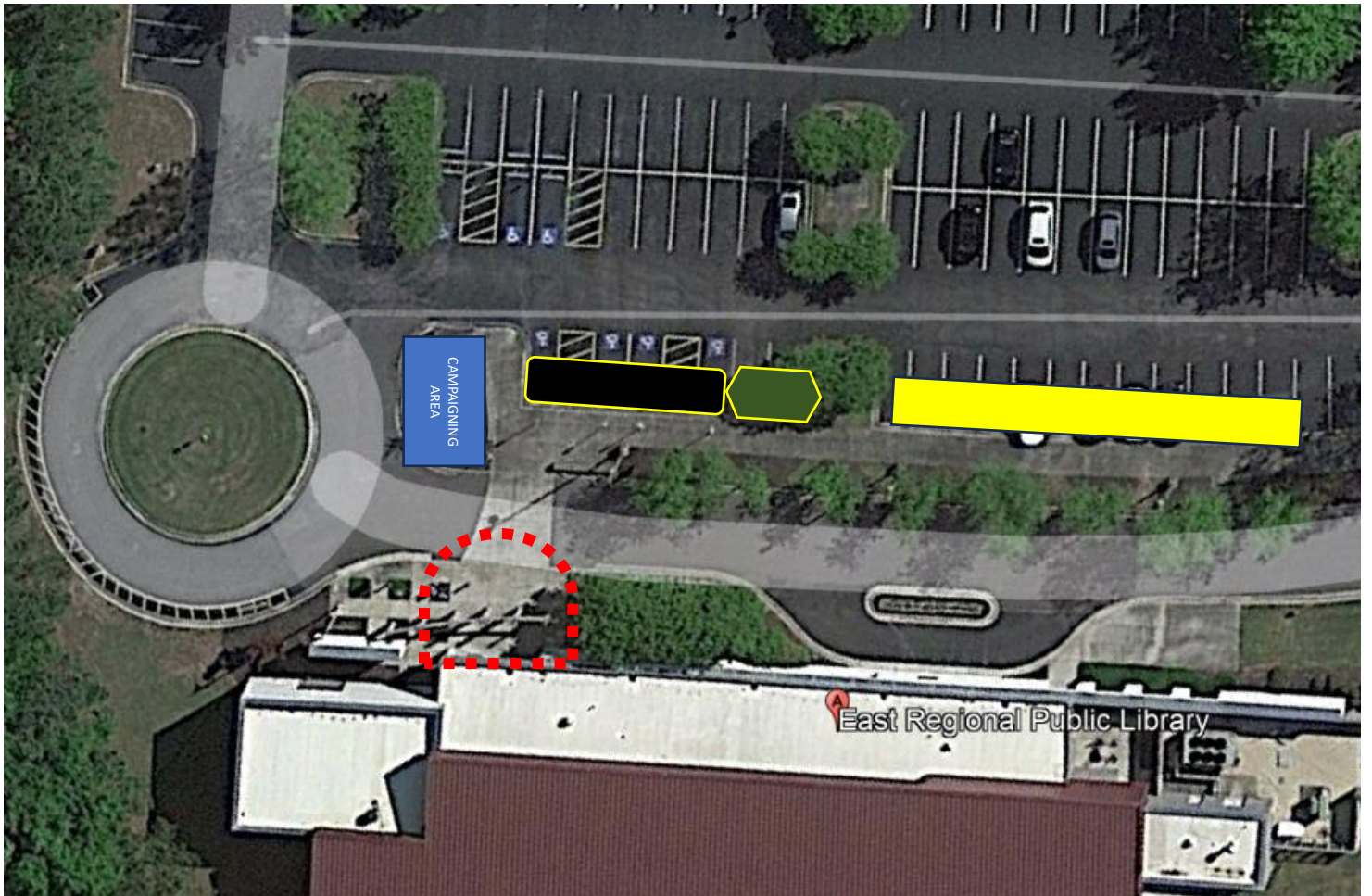
**EARLY VOTING BUFFER ZONES AND CAMPAIGNING AREAS**

**B – CLIFFDALE RECREATION CENTER – 6404 Cliffdale Rd. Fayetteville**



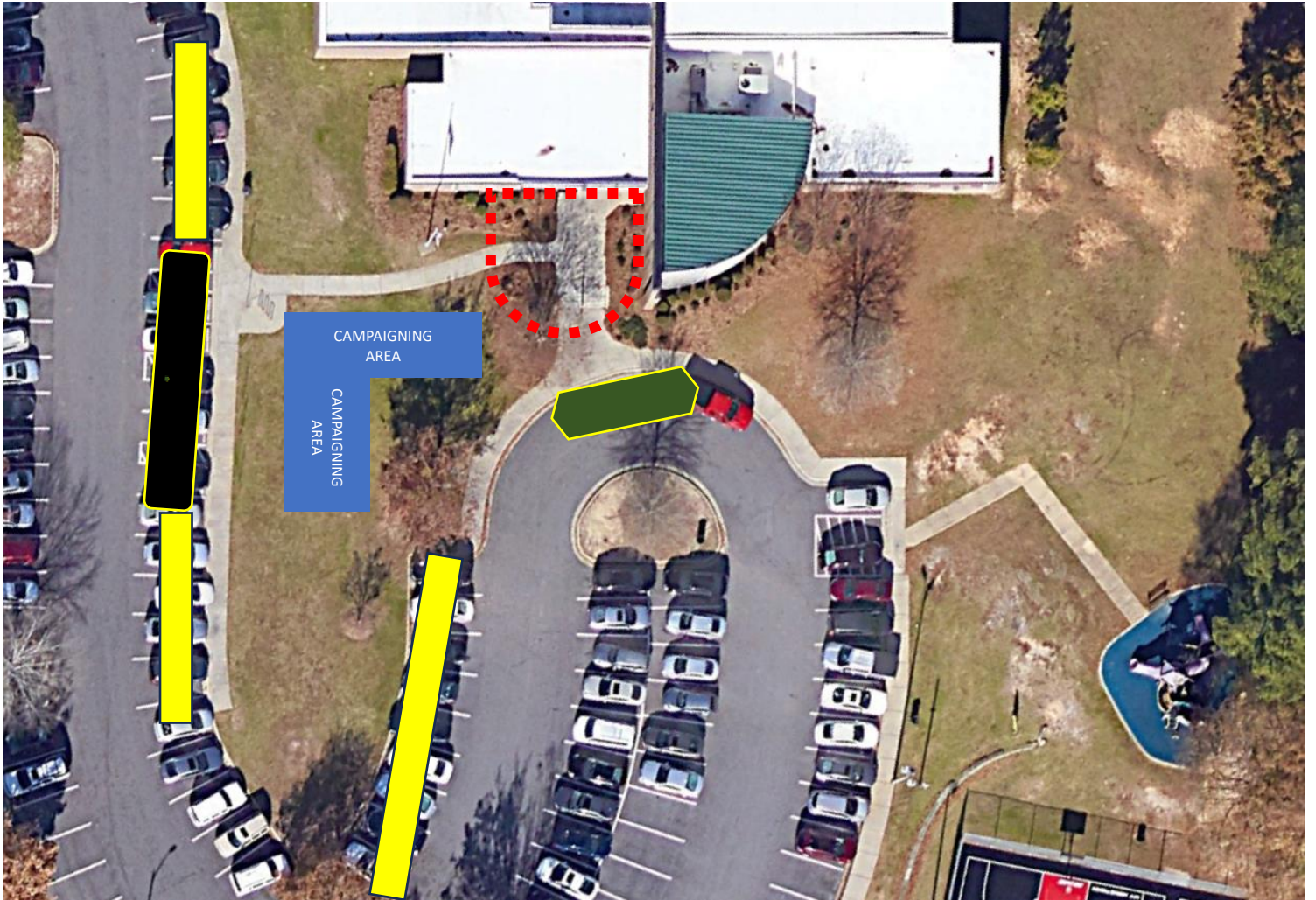
# EARLY VOTING BUFFER ZONES AND CAMPAIGNING AREAS

## E – EAST REGIONAL LIBRARY – 4809 Clinton Rd. Fayetteville



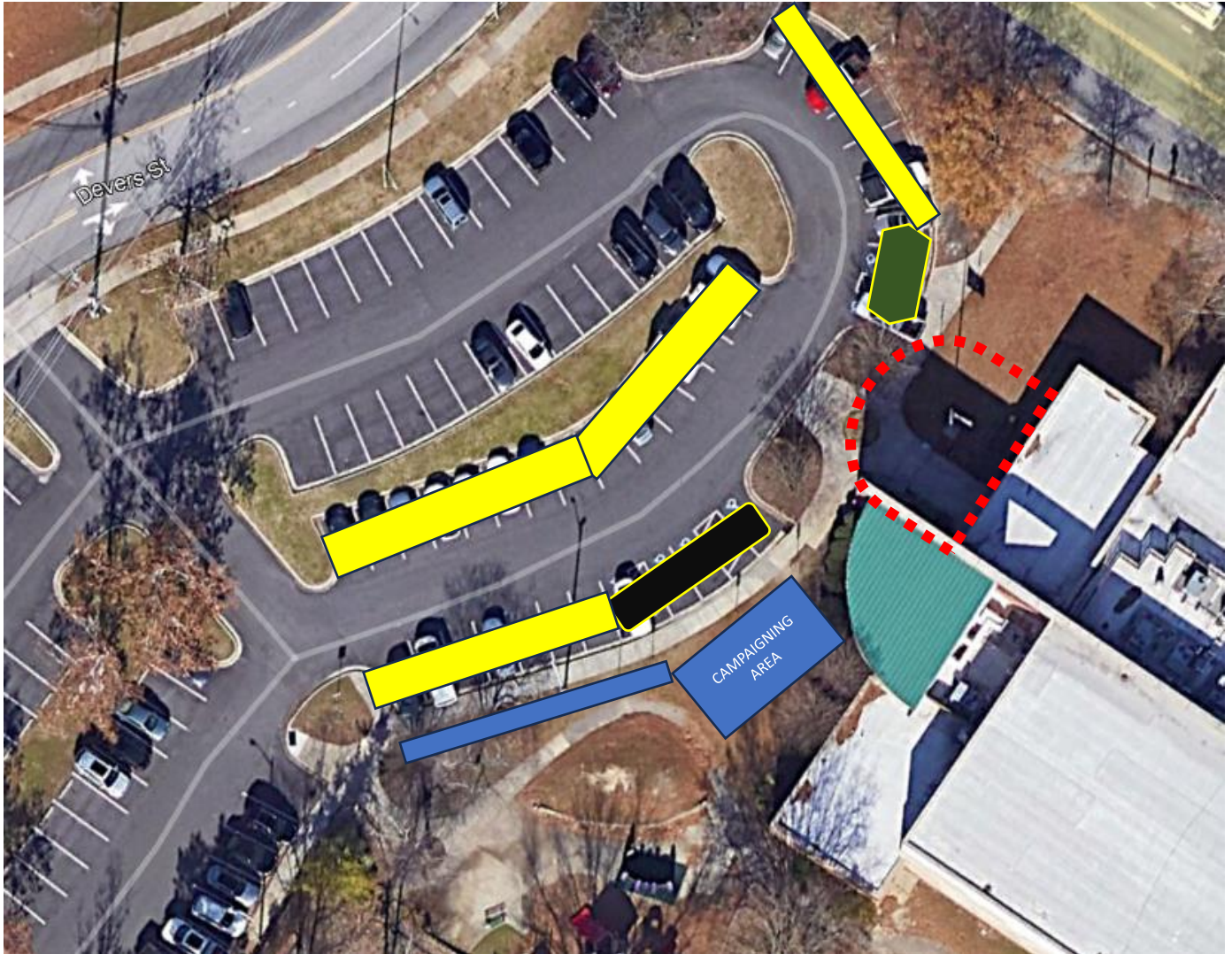
# EARLY VOTING BUFFER ZONES AND CAMPAIGNING AREAS

## G – SMITH RECREATION CENTER – 1520 Slater Ave. Fayetteville



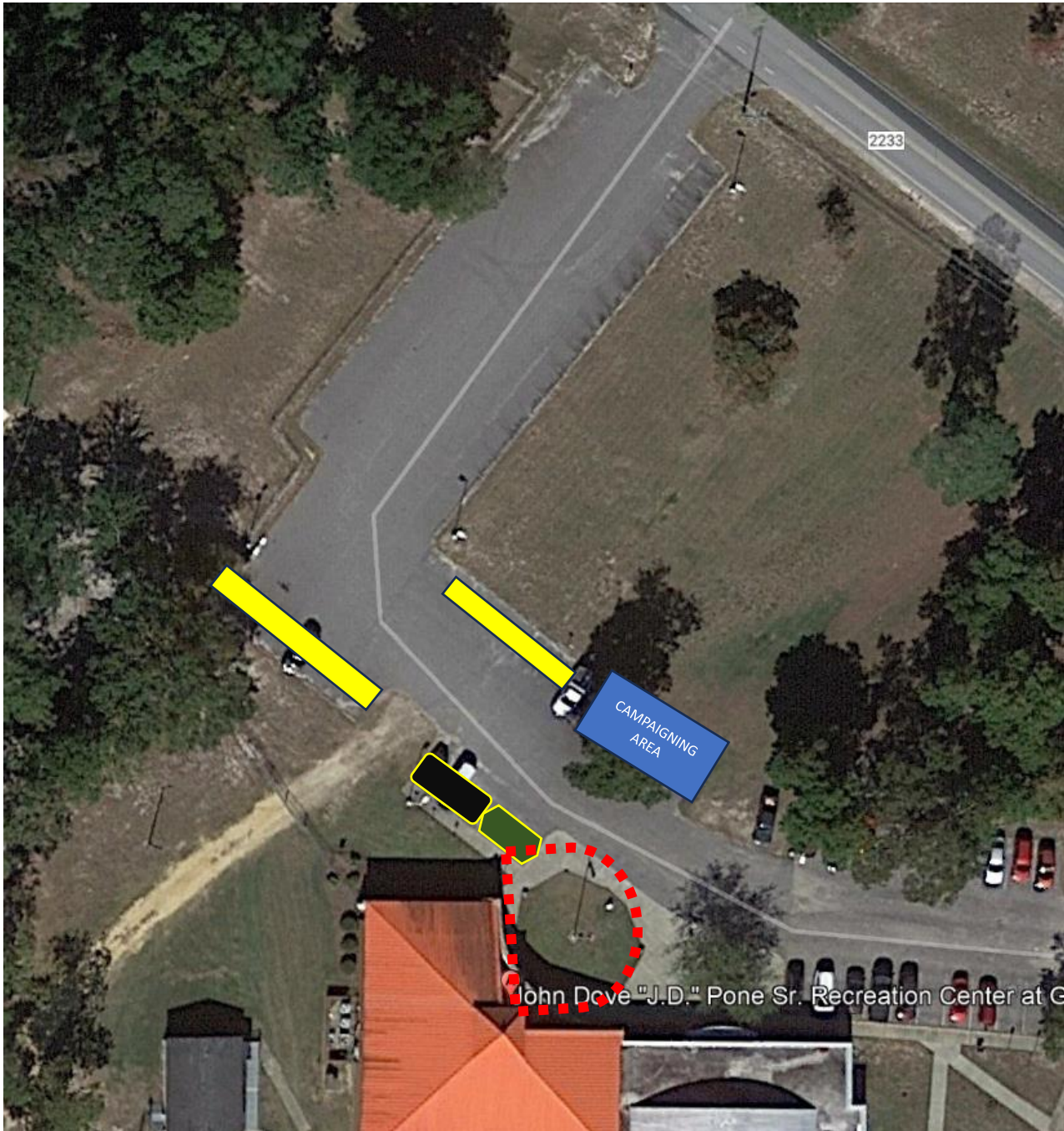
# EARLY VOTING BUFFER ZONES AND CAMPAIGNING AREAS

## I – KIWANIS RECREATION CENTER – 352 Devers St. Fayetteville



**EARLY VOTING BUFFER ZONES AND CAMPAIGNING AREAS**

**J – JOHN “JD” PONE RECREATION CENTER – 2964 School Rd. Hope Mills**



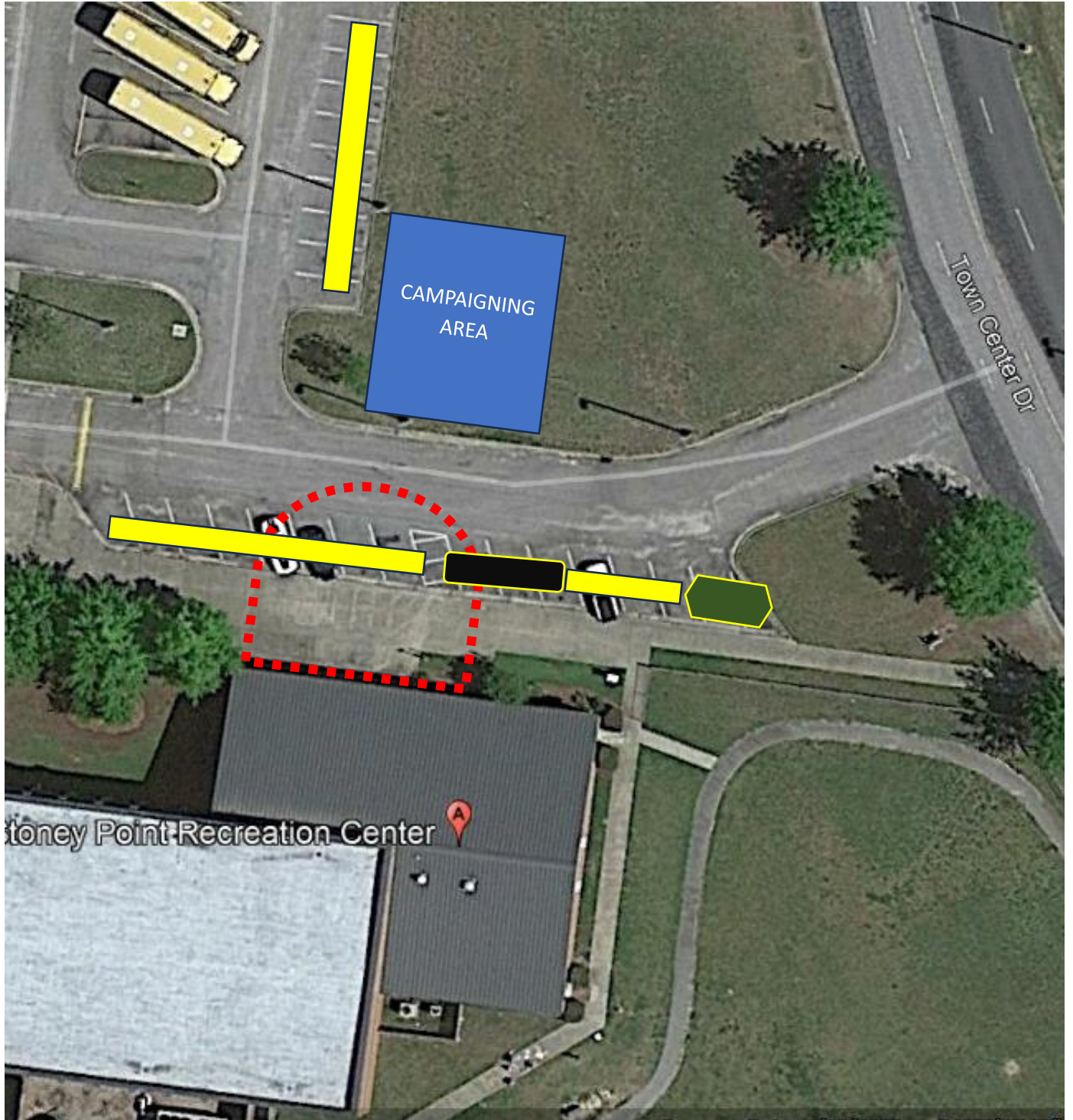
**EARLY VOTING BUFFER ZONES AND CAMPAIGNING AREAS**

**L – SPRING LAKE RECREATION CENTER – 245 Ruth St. Spring Lake**



**EARLY VOTING BUFFER ZONES AND CAMPAIGNING AREAS**

**M – STONEY POINT RECREATION CENTER – 7411 Rockfish Rd. Fayetteville**





**EARLY VOTING BUFFER ZONES AND CAMPAIGNING AREAS**

**N – COLLEGE LAKES RECREATION CENTER – 4945 Rosehill Rd. Fayetteville**

